

# Welcome Package

Swiss School in Singapore – A Unique Learning Experience



## Welcome Message from the Principal

Imagine: a superb school nestled in a tropical forest, away from the urban bustle, with ample space for kids to explore and play as well as providing the best care and facilities possible.

The Swiss School in Singapore is just that. It has everything you could wish for: caring attentive teachers with a modern approach to learning, who are dedicated to providing personalized and individual care and support.

The creative and physical nurturing of our students is of utmost importance. We teach them the intrinsic values of social responsibility, leadership and caring for their companions within a multi-cultural environment. These values will be with them for the rest of their life.

As an international school, recognized with the highest possible standards, the programmes here are offered in both German and English. We are affiliated with the United World College of South East Asia (UWCSEA). For their further studies, we prepare our students for a smooth transition to the UWCSEA or schools that are part of the Swiss or German education systems.

We welcome all nationalities, races and religions. We regard each child as a unique individual and, in cooperation with parents, we provide for most specific needs.

So come and enjoy our family atmosphere, our high academic standards, our bilingual approach, our wide range of school activities and last, but not least, our excellent facilities, which include modern classrooms, a multi-purpose hall and a swimming pool.

You are most welcome to visit our school.

Yours sincerely,

Principal of the Swiss School in Singapore

## General Information SSiS

### Class-Mum list

Please feel free to contact your class-mum if you have any questions.

### Uniforms

The school uniform can be purchased from the school office. Parents could also choose to buy second-hand uniforms. Please contact [info@swiss-school.edu.sg](mailto:info@swiss-school.edu.sg)

### Car-Decal

If you are not a Swiss Club member, you may collect a car decal from the school's office. With this decal, you are allowed to drop-off and pick-up your child/children in the school premises.

## Vocal and Instrumental Programme at GESS (German European School in Singapore)

The wider GESS community including students, parents, faculty and staff as well as neighbouring families can learn a variety of musical instruments within the Vocal and Instrumental Programme (VIP). Further details including fees and enrolment forms are available from the Vocal and Instrumental Programme Coordinator via email to [music@gess.sg](mailto:music@gess.sg).

## Arriving in Singapore

Swiss citizens and EU-citizens automatically receive a 90-day visitor's pass on arrival at the point of entry. Visitors must satisfy the following basic entry requirements before they can be considered for entry into Singapore:

- A passport with at least 6 months validity
- Sufficient funds to last for the intended period of stay in Singapore
- Completed Disembarkation/Embarkation Card

A return ticket is not required, if a family member has a valid contract for employment in Singapore.

Foreign professionals and executives who wish to work in Singapore and stay longer may apply, together with their employer, for an Employment Pass (EP). Information on eligibility and EP types can be found on the web page of the Ministry Of Manpower:

[www.mom.gov.sg](http://www.mom.gov.sg)

Swiss citizens intending to stay in Singapore for more than a year have to register at the Swiss Embassy (**Embassy of Switzerland**, 1 Swiss Club Link, Singapore 288162  
Phone 6468 5788  
Fax 6466 8245.

Opening Hours are: Monday-Friday 9:00am -12:00noon (Afternoons only with prior appointment). (Closed Saturday, Sunday and Public Holidays).

In addition to a valid passport the following documents are required to register:

- Certificate of departure from the municipality of last residence (Abmeldebestätigung/Certificat de départ)
- Certificate of Origin (Heimatschein/Acte d'Origin)

The Swiss Embassy can assist you on consular matters such as passports, civil registration matters, political rights (voting) and legal matters and will provide you with further information regarding the Swiss community in Singapore.

Information on living abroad can also be found in various leaflets: "Tips for the Swiss Abroad" published by the Service for the Swiss Abroad and in the country dossiers of the Federal Office for Migration ("Swissemigration"). Swiss nationals abroad who are registered with the Swiss Embassy in Singapore also receive the **Swiss Review**, which reports on issues of interest to Swiss nationals, in particular changes to laws that are relevant to the Swiss abroad.

## Helpful Internet Links

Swiss School in Singapore	<a href="http://www.swiss-school.edu.sg">www.swiss-school.edu.sg</a>
Swiss Embassy Info-site	<a href="http://www.eda.admin.ch/singapore">www.eda.admin.ch/singapore</a>
Swiss Association	<a href="http://www.swiss-sg.org">www.swiss-sg.org</a>
Swiss Club	<a href="http://www.swissclub.org.sg">www.swissclub.org.sg</a>
Swiss Chamber of Commerce	<a href="http://www.swisscham.sg">www.swisscham.sg</a>
Expatriates web page	<a href="http://www.expatsingapore.com">www.expatsingapore.com</a>
Singapore: The Complete Residents' Guide	<a href="http://www.explorer-publishing.com">www.explorer-publishing.com</a>
Reiseführer Singapur	<a href="http://wikitravel.org/en/Singapore">http://wikitravel.org/en/Singapore</a>
German Embassy	<a href="http://www.sing.diplo.de">www.sing.diplo.de</a>
German Association (Deutsches Haus)	<a href="http://www.germanclub.org.sg">www.germanclub.org.sg</a>
Austrian Embassy	<a href="http://austria.visahq.com/embassy/Singapore/">austria.visahq.com/embassy/Singapore/</a>

## Drivers Licence / Transportation

### International driver's licence

In accordance with Singaporean law, you have to convert your driving license within one year of your arrival or your insurance will not cover accidents. You may convert your driving licence by taking a 'Basic Theory Test'. For registration please contact online with the following centres.

#### Bukit Batok Driving Centre

815 Bukit Batok West Avenue 5, 659085 Singapore  
Phone 6561 1233/[www.bbdc.sg](http://www.bbdc.sg)

#### Comfort Driving Centre

205 Ubi Avenue 4, 408805 Singapore  
Phone 6841 8900/[www.comfortdrivingcentre.com.sg](http://www.comfortdrivingcentre.com.sg)

#### Singapore Safety Driving Centre

3 Ang Mo Kio Street 62, 569139 Singapore  
Phone 6482 6060/[www.ssdc.com.sg](http://www.ssdc.com.sg)

### Cash card

You need this card to pay the Electronic Road Pricing charge. At most 7/11 stores, car parks and gas-stations you may "top it up". For this, you need to have a Nets-Card, however sometimes cash is accepted too.

### Nets-Card

In some shops you can only pay with cash or Nets-Card. Make sure your bank provides this card or check if it is already integrated in your bank card. For some shops or businesses a cheque may be accepted as well.

### EZ-Link

You will use this card for MRT transport. It is available at any MRT-Station or 7/11 store, where it can be topped up too.

As public transport is good and there is an efficient and affordable taxi system, it is also possible to live in Singapore without owning a car. To easily book a cab, download apps like Uber, Grab, SMRT, ComfortDelgro on your smartphone.

### Check the following websites/links:

Street directory	<a href="http://www.streetdirectory.com.sg">www.streetdirectory.com.sg</a>
Guide for all public transportations	<a href="http://www.transitlink.com.sg">www.transitlink.com.sg</a>
Taxi Comfort Delgro	<a href="http://www.cdgtaxi.com.sg">www.cdgtaxi.com.sg</a>
EZ link and public transport	<a href="http://www.ezlink.com.sg">www.ezlink.com.sg</a>
Public transport, busses, routes	<a href="http://www.sbstransit.com.sg">www.sbstransit.com.sg</a>

## Cinema

<http://sg.movies.yahoo.com>

## Concerts/Events/Tickets

[www.sistic.com.sg](http://www.sistic.com.sg)

## Food

Cold Storage (6th Avenue, Sime Darby Centre, 24h at Holland-Village and Jelita), Fair Price, Fair Price Finest and Giant are the main supermarkets in SG. Most of them offer home delivery. One could get home delivery via Redmart ([www.Redmart.com](http://www.Redmart.com)), Kenny Grocery ([www.kennygroceryonline.com](http://www.kennygroceryonline.com)) or Honestbee ([www.honestbee.com](http://www.honestbee.com)). For fresh food, meat and fish try the “wet markets” near your home. Swiss and German food you will find at the German Market Place, Huber’s Butchery and at the Swiss Butchery.

## Christian communities

### German speaking Catholic community St. Elisabeth

Service: Maris Stella Convent, 49D Holland Road, Singapore 258852

Phone 6465 5660

[www.dt-katholiken.sg](http://www.dt-katholiken.sg)

### German speaking Protestant community

Service: Chapel of the Orchard Road Presbyterian Church, 3 Orchard Road

Singapore 238825

Phone 6457 5604

<http://www.evkirche.sg>

## Shopping Malls

TAKASHIMAYA

The famous shopping mall of Orchard, has the biggest Kinokuniya (book shop), and Luxury brands, Supermarkets

ISETAN SCOTTS

Good choice for affordable children’s clothing and shoes, cinemas, household goods

TANGS

The oldest mall in SG, with a good household department

PARAGON

Prestigious brand names, METRO, good children’s selection, TOYS R US

FORUM

Dedicated to children, boutiques, TOYS R US

TANGLIN MALL

Children’s music, expat Supermarket, Fashion, Toys, big organic shop, very good coffee (Beviamo)

PLAZA SINGAPURA

Carrefour, Spotlight (craft material),

Marks & Spencer, cinemas, Daiso

GREAT WORLD CITY

Zara, Esprit and many other shops, plus cinemas

SUNTEC CITY

Big Carrefour, lots of shops and restaurants

VIVO City	All brand names, Giant supermarket
IKEA	Alexandra Road and Tampines
IMM Jurong	The Outlet Mall, Giant, local shops, Esprit Outlet, lots of Outlet stores for Fashion, Sports, Shoes, Jewellery, etc.
ION	Modern centre with lots of shops
313@SOMMERSET	Modern centre with lots of shops

## Books/Magazines/Bookstores

FUN 4 KIDS	Information for your children's interests and activities in Singapore!!
EXPAT - LIVING	<a href="http://www.expatlivingsingapore.com">www.expatlivingsingapore.com</a> a reference magazine
IMPULSE	German magazine with monthly activities in Singapore, free <a href="http://www.impulse.org.sg">www.impulse.org.sg</a>
BORDERS	<a href="http://www.bordersstores.com">www.bordersstores.com</a>
KYNOKUNIYA	<a href="http://www.kinokuniya.com.sg">www.kinokuniya.com.sg</a> German/French/Italian department
POPULAR	<a href="http://www.popular.com.sg">www.popular.com.sg</a> (stationery, school material)
AMAZON	<a href="http://www.amazon.de">www.amazon.de</a> High delivery cost to SG, no GST

## Hospitals and Clinics

### Private Hospitals:

<b>Gleneagles Hospital</b> 6 Napier Road, Singapore 258500 Phone 6473 7222 <b>24h walk-in- clinic</b> <b>Good for emergencies</b>	<a href="http://www.gleneagles.com.sg">www.gleneagles.com.sg</a>
<b>Mount Elizabeth Medical Center</b> 3 Mount Elizabeth Rd, Singapore 228510 Phone 6737 2666 <b>24h walk-in-clinic</b> <b>Good for special clinics</b>	<a href="http://www.mountelizabeth.com.sg">www.mountelizabeth.com.sg</a>
<b>Raffles Hospital</b> 585 North Bridge Road, Singapore 188770 Phone 6311 1111 <b>Dental Emergencies</b>	<a href="http://www.rafflesmedicalgroup.com/hospital">www.rafflesmedicalgroup.com/hospital</a>

### Government Hospital:

<b>KK Women's and Children's Hospital</b> Phone 6293 4044	<a href="http://www.kkh.com.sg">www.kkh.com.sg</a>
--	--

100 Bukit Timah Road, Singapore 229899

**24h walk-in-clinic**

**Best to go in case of accidents with Kids and Women**

**National University Hospital, NUH**

<http://www.nuh.com.sg/>

5, Lower Kent Ridge Road, Singapore 119074

Phone 6779 5555

**Adult emergency 24-hour hotline**

Phone 6772 5000

**Children emergency 24-hour hotline**

Phone 6772 2555

## **More Clinics**

**International Medical Clinic**

[www.imc-healthcare.com](http://www.imc-healthcare.com)

**Camden Clinic**

1 Orchard Boulevard #14-06, Singapore 248649

Phone 6733 4440

**Jelita Clinic**

293 Holland Road #02-08, Singapore 278628

Phone 6465 4440

**Katong Clinic**

88 East Coast Road #02-07, Singapore 423371

Phone 6342 4440

**Good doctors for kids, sometimes Expats too**

**Specialized in family, paediatric and travel medicine**

**Kinder Clinic**

[www.kinderclinic.com.sg](http://www.kinderclinic.com.sg)

Different locations

Email: contactus@kinderclinic.com.sg

**The Kids dentist**

<http://www.thekidsdentist.com.sg>

1 Orchard Boulevard #13-06

Singapore 248649

Phone 6235 7279

**Smilefocus Family Dentistry**

[www.smilefocus.com.sg](http://www.smilefocus.com.sg)

1 Orchard Boulevard

#14-02 Camden Medical Centre

Singapore 248649

Phone 6834 0877



## Braces

### MEOC

Mount Elizabeth Medical Centre  
#10-03 floor  
meoc@braces.com.sg  
Phone 6327 2237

[www.braces.com.sg](http://www.braces.com.sg)

[www.invisiblebraces.com.sg](http://www.invisiblebraces.com.sg)

### The Braces Practice

12A Lorong Mambong Holland Village  
Singapore 277676  
Phone 6463 2306

<http://www.thebracespractice.com/>

## Pharmacy

Watsons  
Guardien

<https://www.watsons.com.sg/store-finder>

<https://www.guardian.com.sg/store-finder>

## More Important Numbers

Police  
Police Hotline

phone 999  
phone 1800 255 0000  
[www.spf.gov.sg](http://www.spf.gov.sg)

Fire / Ambulance

phone 995  
[www.scdf.gov.sg](http://www.scdf.gov.sg)

Samaritans of Singapore

phone 1800 221 4444  
[www.sos.org.sg](http://www.sos.org.sg)

Parkway Ambulance-Service

phone 6735 5000

## Further Links

Yellowpages

[www.yp.sg](http://www.yp.sg)

[www.google.com.sg](http://www.google.com.sg)

Events, fairs and bazaars

[www.theexpatfairs.com](http://www.theexpatfairs.com)

Website for expats

[www.expatsingapore.com](http://www.expatsingapore.com)

The Singapore Tourism Board

[www.stb.com.sg](http://www.stb.com.sg)

## Volunteering

Riding for the disabled  
Friends of the museum  
More

[www.rdasingapore.org.sg](http://www.rdasingapore.org.sg)

[www.fom.sg/](http://www.fom.sg/)

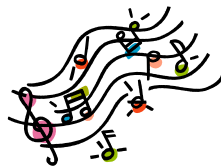
[www.volunteersingapore.com/blog/](http://www.volunteersingapore.com/blog/)

**1.** Meine Stadt ist nicht Berlin,  
nicht Paris und auch nicht Chur,  
weder Caracas noch Wien.  
Meine Stadt ist Singapur.

Hier, man glaubt es wirklich kaum,  
hier, inmitten der Natur,  
liegt, als wär's in einem Traum,  
die Schweizer Schule Singapur.

**Refrain:**

Selamat Datang.  
Grüezi mitenand.  
Wir geben uns die Hand  
und das Leben ist schön.



Mach den ersten Schritt!  
Komm, ich nehm dich mit,  
und du willst nie wieder fort  
von diesem wunderschönen Ort.

**2.** Komm, tritt ein, sei unser Gast!  
Unterbrich hier deine Tour!  
Mach hier eine kleine Rast,  
hier bei uns in Singapur.

Hier an diesem schönen Ort  
lernt sich's prima. Schau doch nur!  
Lesen, Rechnen, Spiel und Sport;  
Schweizer Schule Singapur.

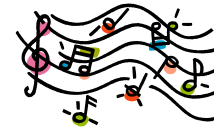
**Refrain**

**3.** Leider bleibt die Zeit nicht stehn.  
Unerbittlich tickt die Uhr.  
Irgendwann, da werd ich gehen,  
weg von meinem Singapur.

Wohin es mich dann auch treibt,  
es gibt immer eine Spur,  
eine Spur zurück, die bleibt,  
zur Schweizer Schule Singapur.

**Refrain:**

Selamat Datang.  
Grüezi mitenand.  
Wir geben uns die Hand  
und das Leben ist schön.



Mach den ersten Schritt!  
Komm, ich nehm dich mit,  
und du willst nie wieder fort.

Selamat Datang.  
Grüezi mitenand.  
Wir geben uns die Hand  
und das Leben ist schön  
Mach den ersten Schritt!  
Komm, ich nehm dich mit!  
Terima Kasih.  
Es ist schön, dass es dich gibt.